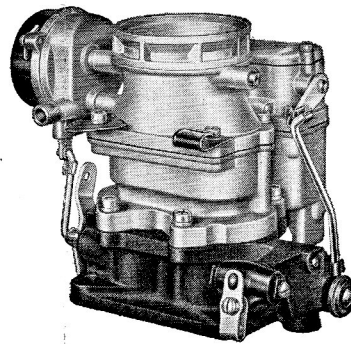


MODELS

"200"—1951-52

CLIPPER "2601"—1953



Casting No. 803 on face of flange

**PACKARD
EIGHT
1951-1953**

WGD Dual Down-Draft Climatic Control Carb.—No. 7845

CARBURETOR SPECIFICATIONS

For Packard 8 Cylinder Engine: 3 1/2 Inch Bore, 3 3/4 Inch Stroke

Dimensions: Flange size, 1 1/4 inch dual, 4 bolt type.

Primary venturi, 1 1/32 inch I. D.

Secondary venturi, 2 1/32 inch I. D.

Main venturi, 1-3/16 inch I. D.

Float Level: Distance from float to bowl cover, when needle is seated to be 13/64 inch. Use gauge No. T109-39.**Vents:** Inside, none. Outside vent, No. 10 (.1935") drill.**Gasoline Intake:** Square vertical (push-pull) needle. Seat size No. 42 drill.**Low Speed Jet Tube:** Jet size, No. 67 (.032") drill.

By-pass, size No. 55 (.052") drill.

Economizer, size 1.15 mm (.045") drill.

Idle bleed, size No. 56 (.0465") drill.

Idle Ports: Upper port, slot type, length .187 inch. Width, .030 inch.**Idle Port Opening:** .135 to .141 inch above upper edge of valve with valve closed tight.**Lower Port (For Idle Adjustment Screw):** Size, .0615 to .0655 inch diameter.**Set Idle Adjustment Screw:** 1/2 to 1 1/2 turns open. For richer mixture turn screw out. Do not idle engine above 400 r.p.m. on ultramatic transmission or above 450 r.p.m. on standard transmission.**Nozzle:** In primary venturi, angle 45°. Nozzle is installed permanently. Do not remove. Anti-percolating well; plug jet size, No. 66 drill. Anti-percolating well to idle passage, restriction size: No. 68 (.031") drill.**Metering Rod (Vacumeter Type):** Economy step, .0685 inch diameter. Middle step tapers to .066 inch diameter. Power step, .0595 inch diameter. Length 2-59/64 inches.**Metering Rod Jet:** .089 inch diameter.**Metering Rod Setting:** After adjusting for pump stroke, set metering rod as follows: With throttle tightly closed, hold metering rods (assembled on vacumeter link) in maximum down position, tighten clamp screw securely with metering rod arm contacting vacumeter link.**Accelerating Pump:** Pressure type delayed action plunger (non-adjustable lever). Discharge jet (twin) size No. 74 drill. Intake ball check, size No. 40 (.098") drill. Discharge (needle seat) size No. 50 (.070") drill.**Pump Adjustment:** 5/16 inch pump stroke (full throttle position).**Choke:** Carter Climatic Control set one point rich. Butterfly type, offset valve. Choke heat suction hole in body, size No. 36 drill.**Vacuum Spark Port:** .103 to .105 inch diameter. Top of port .052 to .062 inch above valve.

Motor Tune-Up—Be Accurate! Always Use Feeler Gauges!

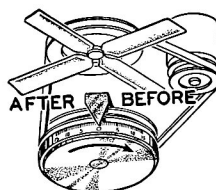
CAUTION: Change worn or leaky flange gaskets. Tighten manifold bolts and test compression before adjusting carburetor.



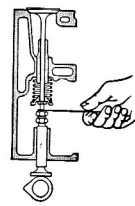
**Spark Plug
Gap**
.028"



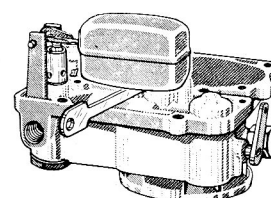
**Breaker Point
Setting**
(1951) .017"
(1952-53) .015"



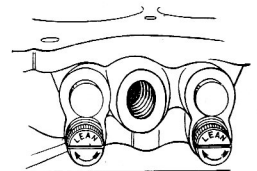
Ignition Timing
Breaker Points to Open:
6° B. T. D. C.



**Valve Setting
(Hot)**
Intake .007"
Exhaust .010"



Float Setting
13/64 Inch
(Use Gauge T109-39)



**Idle Adjustment
Screw Setting**
1/2 to 1 1/2
Turns Open

CARBURETOR ADJUSTMENTS

FLOAT ADJUSTMENT: With bowl cover gasket removed, bowl cover inverted and needle seated, there should be 13/64 inch (gauge T109-39) between top of float and bowl cover. Adjust by bending float arm.**PUMP ADJUSTMENT:** Back out throttle lever set screw until throttle valves seat in bores of carburetor. Place Uni-

versal pump travel gauge T109-117S inverted on edge of dust cover boss of bowl cover. Turn knurled nut of gauge until finger on gauge just touches top of plunger shaft. The distance from the dust cover boss to the top of the plunger shaft should be 13/32 inch (distance from base to tip of finger on gauge). Adjust by bending throttle connector rod at upper angle.

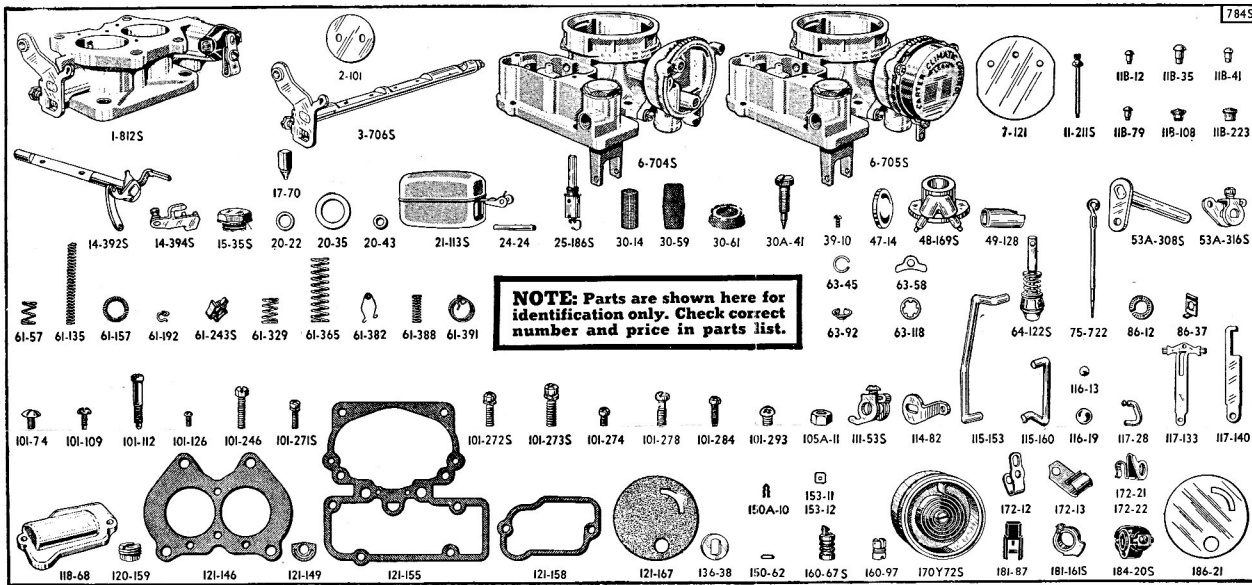
METERING ROD ADJUSTMENT: The metering rods must be adjusted after the pump adjustment or when leaner than standard rods are installed. No metering rod gauges are necessary; procedure is as follows: With the throttle lever set screw backed out and throttle valves seated in bores of carbureter, press down on vacuumer link until metering rods bottom. With rods held in this position, revolve metering rod arm until lip contacts vacuumer link. Hold in place and carefully tighten metering rod arm set screw.

FAST IDLE ADJUSTMENT: With the thermostatic coil housing, gasket and baffle plate removed, crack throttle

valve and hold choke valve closed. Then close throttle. There should now be .023" clearance (gauge T109-189) between throttle valve and bore of carbureter (side opposite idle port).

Adjust by bending the choke connector rod at lower angle.

UNLOADER ADJUSTMENT: Must be made after fast idle adjustment. Hold throttle valve wide open and close choke valve as far as possible without forcing; there should now be 3/8 inch clearance between upper edge of choke valve and inner wall of air horn. Adjust by bending arm on choke trip lever (tool T109-187).



Packard 8—1951-1953—Carburetor No. 784S

WHEN SERVICING, USE GASKET ASSORTMENT No. 196; REPAIR PACKAGE No. 1568A

PART NAMES IN CAPITAL LETTERS, LISTED BELOW, INDICATE CONTENTS OF REPAIR PACKAGE

Part No.	PART NAME	Part No.	PART NAME
1-812S	Body flange assembly.....	75-767	Metering rod, 1 size lean.....(2)
1A-39	Flange gasket.....	75-768	Metering rod, 2 sizes lean.....(2)
2-101	Throttle valve.....(2)	86-12	Flange stud lock washer.....(4)
3-706S	Throttle shaft and lever assembly.....	86-37	Terminal lock washer.....(2)
6-704S	Air horn and piston housing assembly.....	101-74	Throttle shaft arm attaching screw.....
6-705S	Air horn assembly.....	101-109	Switch terminal screw.....(2)
7-121	Choke valve.....	101-112	Terminal cap attaching screw.....
11-211S	LOW SPEED JET ASSEMBLY.....(2)	101-126	Throttle valve attaching screw.....(4)
11B-12	Rivet plug.....(3)	101-246	Throttle lever adjustment screw.....
11B-35	Rivet plug.....(3)	101-271S	Dust cover attaching screw and washer assembly.....(2)
11B-41	Rivet plug.....(3)	101-272S	Air horn attaching screw and washer assembly.....(8)
11B-79	Rivet plug.....(2)	101-273S	Body flange attaching screw and washer assembly.....(4)
11B-108	IDLE PORT RIVET PLUG.....(2)	101-274	Coil housing attaching screw.....(3)
11B-223	NOZZLE RIVET PLUG.....(2)	101-278	Pump jet housing attaching screw.....
14-392S	Choke piston lever, link and shaft assembly.....	101-284	Piston housing attaching screw.....(3)
14-394S	Choke trip lever and pin assembly.....	101-293	Metering rod arm clamp screw.....(2)
15-35S	Strainer nut assembly.....	105A-11	Flange stud nut.....(4)
17-70	PUMP CHECK NEEDLE.....	111-53S	Metering rod arm and screw assembly.....
20-22	Needle seat gasket.....	114-82	THROTTLE SHAFT ARM.....
20-35	BOWL STRAINER GASKET.....	115-153	THROTTLE CONNECTOR ROD.....
20-43	Piston housing gasket.....	115-180	Choke connector rod.....
21-113S	Float and lever assembly.....	116-13	PUMP INTAKE CHECK BALL.....
24-24	Float lever pin.....	116-19	Switch ball.....
25-186S	NEEDLE AND SEAT ASSEMBLY.....	117-28	Pump arm link.....
30-14	BOWL COVER STRAINER.....	117-133	Vacuumeter piston link.....
30-59	STRAINER.....	117-140	Fast idle link.....
30-61	Switch strainer.....	118-68	Dust cover.....
30A-41	Idle adjustment screw.....(2)	120-159	METERING ROD JET.....(2)
39-10	Choke valve attaching screw.....(2)	121-146	BODY FLANGE GASKET.....
47-14	Choke cylinder welsh plug.....	121-149	PUMP JET GASKET.....
48-169S	Pump jet and housing assembly.....	121-155	AIR HORN GASKET.....
49-128	Switch plunger.....	121-158	DUST COVER GASKET (DISCONTINUED).....
53A-308S	Pump operating lever and countershaft assembly.....	121-167	COIL HOUSING GASKET.....
53A-316S	Pump arm and screw assembly.....	136-38	Throttle shaft washer.....
61-57	Idle adjustment screw lock spring.....(2)	150-62	Choke piston pin.....
61-134	VACUUM PISTON SPRING.....	150A-10	Pin spring.....
61-135	Vacuum piston spring (Sup. by 61-134).....	153-11	Switch contact spring shim (.018").....(3)
61-150	LOWER PUMP SPRING.....	153-12	Switch contact spring shim (.006").....(2)
61-157	Plunger spring.....	160-67S	Vacuum piston and pin assembly.....
61-192	Needle pull clip.....	170V-72S	Thermostatic coil and housing assembly.....
61-243S	Switch contact spring and washer assembly.....	172-12	Terminal cap hold down clip.....
61-329	Upper pump spring.....	172-13	Cable clip.....
61-365	Lower pump spring (Sup. by 61-150).....	172-21	Throttle connector rod retainer.....
61-382	METERING ROD SPRING.....	172-22	THROTTLE AND CHOKE CONNECTOR ROD RETAINER.....(2)
61-388	Switch return spring.....	181-87	Switch guide block.....
61-391	Fast idle cam spring.....	181-161S	Fast idle cam assembly.....
63-45	PUMP CHECK BALL RETAINER RING.....	184-20S	Terminal cap assembly.....
63-58	Coil housing retainer.....(3)	186-21	Baffle plate.....
63-92	Pump spring retainer.....	192-11U	Carter starter switch unit.....
63-118	Throttle shaft retaining ring.....		
64-122S	PLUNGER, ROD, SPRING AND RETAINER ASSEMBLY.....		
75-722	METERING ROD, STANDARD.....(2)		

NOTE: Figures in parentheses indicate number of pieces used in one carburetor. Where no figure is shown, only one is used.